

CERTIFIED LAND CORNER RECORDATION

DESCRIPTION OF CORNER EVIDENCE FOUND, AND ORIGINAL RECORD (If known)

LOCATION

1. Corner established by this survey.

CN1/16

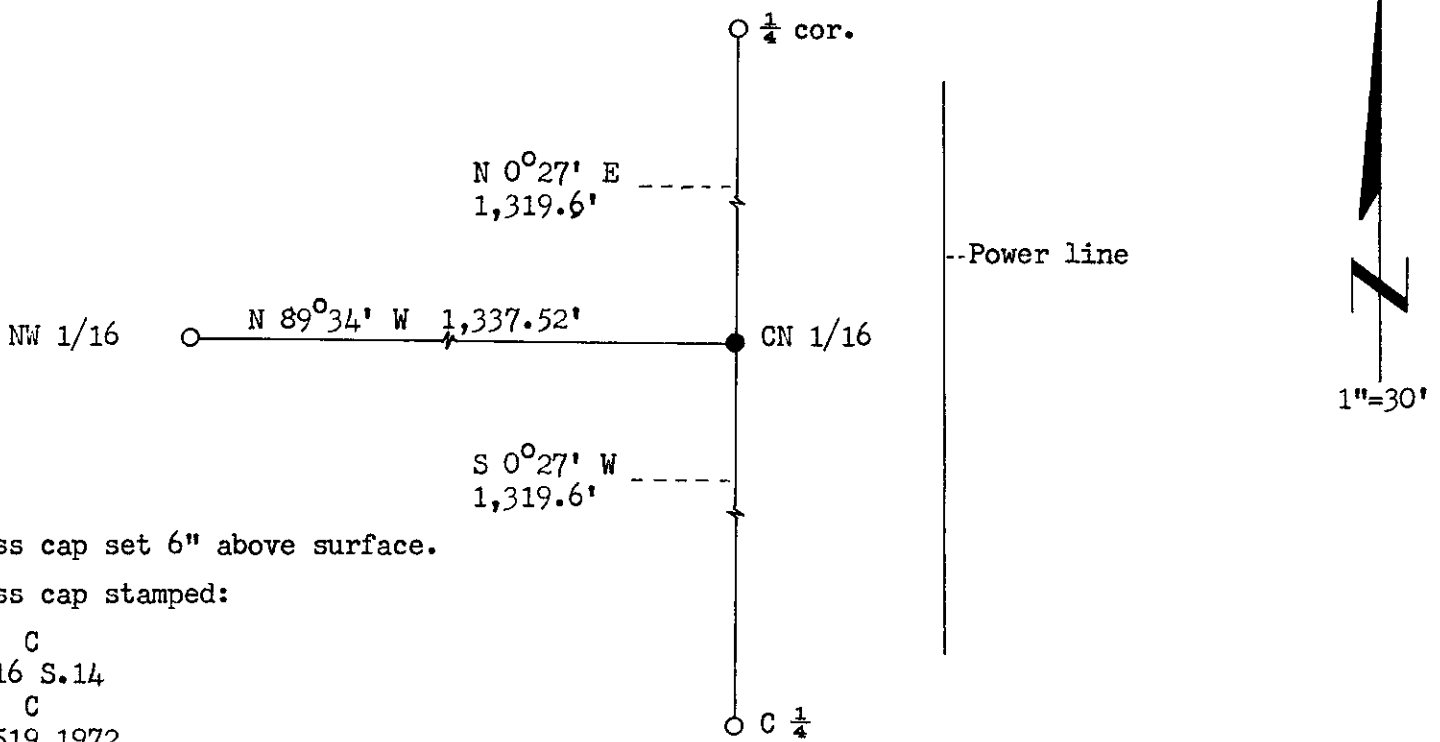
S.14

T.14N., R.65W.
6th P.M.

DESCRIPTION OF MONUMENT AND ACCESSORIES ESTABLISHED
TO PERPETUATE THE ORIGINAL LOCATION OF THIS CORNER:

1. Set 1½" dia. x 30" long galv. iron pipe with brass cap for corner.

SKETCH, WITH COURSE AND DISTANCE TO ADJACENT CORNER IF DETERMINED IN THIS SURVEY.
(May Sketch or Paste Reproduction on Reverse Side.)



I, R.L. Hudson certify that I have carefully performed or reviewed the work done on the diagrammed corner as reported on this recordation form and approve the same.

R.L. Hudson Wyoming L.S. No. 519
Signature of Surveyor Registration No.

STATE OF WYOMING,
Office of Clerk and Recorder,
County of Laramie

This "corner record" was filed for record on the 23rd day of May, 1972, was noted on the cross-index plat and is assigned page No. 14-65, in book No. WYOMING

[Signature]
County Official

Cross Index No. _____	T. _____	R. _____	Mer. _____
_____	T. _____	R. _____	Mer. _____
_____	T. _____	R. _____	Mer. _____
_____	T. _____	R. _____	Mer. _____
_____	T. _____	R. _____	Mer. _____
_____	T. _____	R. _____	Mer. _____
_____	T. _____	R. _____	Mer. _____

K-19 14-65

The State of Wyoming }
County of Laramie } SS

This instrument was filed for record
at 9:27 o'clock P. M. on the
23rd day of May
A. D. 19 22 and is recorded in
Book _____ on page _____



County Clerk & Ex-Officio Register of Deeds
By _____ Deputy